



# HIGH PERFORMANCE FIRETEX SYSTEM PROTECTS ALL PARTS OF HEATHROWS FIFTH TERMINAL

London Heathrow Terminal 5 is part of the London Heathrow Airport complex, serving the UK capital city of London. The Terminal 5 project included several new buildings; the new terminal, a control tower and railway station. It was designed to handle 35m passengers a year and was built at a cost of £4bn.

Opened in 2008, the main building in the complex is the largest free-standing structure in the United Kingdom being 396 m long, 176 m wide and 40 m tall. Its four stories are covered by a single-span undulating steel frame roof, with glass facades angled at 6.5° to the vertical. The area covered by the roof is the size of five football pitches, and each section weighs 2,200 tonnes.

**SHERWIN-WILLIAMS WORKED IN COOPERATION WITH THE PROJECTS ARCHITECTS (RICHARD ROGERS PARTNERSHIP) AND ENGINEERS (ARUP AND MOTT MACDONALD) TO SPECIFY AND PROVIDE FIRE PROTECTION TO THE CORE TERMINAL BUILDING WHICH INCLUDED SUBSTRUCTURE, ROOF AND FACADE, SUPERSTRUCTURE AND BAGGAGE HANDLING STEELWORK.**

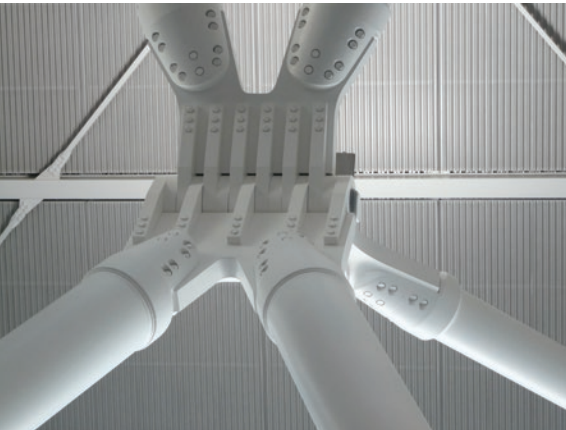
**CLIENT:**  
BAA

**MAIN CONTRACTORS:**  
BAA, AMEC - building services,  
LainO'Rourke, MSCP

**FROM SPEC TO PROTECT**  
[protectiveemea.sherwin-williams.com](http://protectiveemea.sherwin-williams.com)

**SHERWIN  
WILLIAMS®**

# LONDON HEATHROW TERMINAL 5, UK



## SOLUTION

The project had multiple requirements for passive fire protection including coatings to protect over 60, 90 and 120 mins fire ratings.

A range of FIRETEX® products were selected from Sherwin-Williams to achieve appropriate fire protection to the structure. In addition the FIRETEX range offered easier application and a more aesthetically pleasing finish to exposed steel work. These products included:

**SUBSTRUCTURE:** 90 and 120 mins fire protection with Acrolon™ C137V2, Acrolon C237 and FIRETEX M71V2 topcoats.

**SUPERSTRUCTURE:** 60 mins fire protection with Acrolon C137V2, Acrolon C237 and FIRETEX M71V2 topcoats.

**ELECTRICAL SUB STATION:** 120 mins protection with FIRETEX M95.

**BAGGAGE HANDLING STEELWORK:** Macropoxy™ M455V2, FIRETEX FX2000 and FIRETEX M71V2.

**WINDPOSTS:** 60, 90 and 120 mins fire protection with FIRETEX FX2000, FIRETEX FX4000, FIRETEX FX8000.

**ROOF STEELWORK AND INTERNAL FACADE:** Macropoxy C400V2 and Acrolon C237.

**EXTERNAL FACADE:** Epigrip™ J984\*BS, Macropoxy C400V2 MIO and Acrolon C137V2.

\* Now replaced by Zinc Clad™ IV E (80%).

## SUBSTRATES

Steel.

## REQUIREMENTS

To provide fire protection to the core terminal building which included substructure, roof and facade, superstructure and baggage handling steelwork.

## SPECIFICATIONS

Substructure – passive fire protection with 90 and 120 mins fire rating.

- Roof and facade steelwork – protective coatings.
- Superstructure – passive fire protection with 60 mins fire rating.
- Electricity substations – passive fire protection 120 mins fire rating.

## AREA COATED

850,000 litres of FIRETEX products.

## THE SHERWIN-WILLIAMS DIFFERENCE

Sherwin-Williams Protective & Marine delivers world-class industry subject matter expertise, unparalleled technical and specification service, and unmatched regional commercial team support to our customers around the globe. Our broad portfolio of high-performance coatings and systems that excel at combating corrosion helps customers achieve smarter, time-tested asset protection. We serve a wide array of markets across our rapidly growing international distribution footprint, including oil and gas, water and wastewater, bridge and highway, steel fabrication, flooring, food and beverage, rail and power, marine and passive fire protection.

**SHERWIN-WILLIAMS®**

protectiveemea.sherwin-williams.com  
06/21 EMEA10056/V03/PC

### United Kingdom:

+44 (0)1204 556420  
sales.uk@sherwin.com

### Europe and Africa:

+44 (0)1204 556454  
sales.uk@sherwin.com

### Middle East:

+971 4 8840200  
sales.me@sherwin.com

### India:

+91 9871900878  
pmsales.india@sherwin.com