



Pro-Cryl™ 7000

Water-based Blast Primer

Introducing Pro-Cryl™ 7000; a waterbased pre-fabrication primer designed to protect steel plates and sections from corrosion prior to fabrication. Pro-Cryl™ 7000, a highly durable fast drying primer which allows fast re-coatability making it perfect for in-shop application.



Features

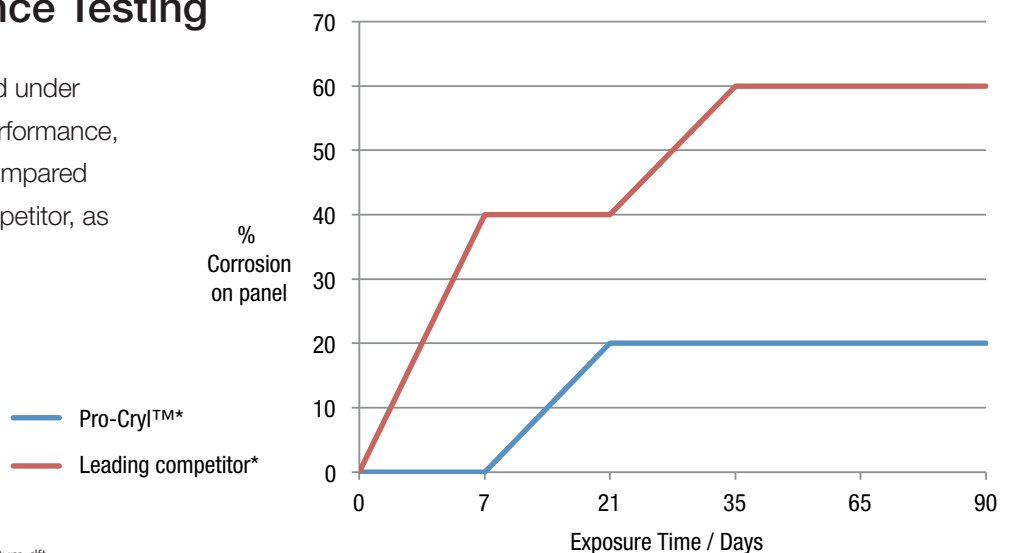
- Durable – up to seven days corrosion free*.
- Fast Drying – touch dry after 15 minutes at 23°C.
- Water-Based – low VOC content.

Benefits

- Long term weather resistance and increased fabrication window.
- Fast re-coatability and reduced project costs.
- Preferable towards environmental regulations.

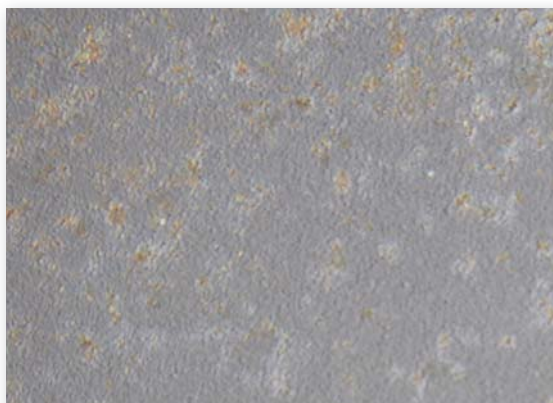
Exterior Performance Testing

Pro-Cryl™ 7000 has been tested under extreme conditions to ensure performance, with exceptional results when compared against the leading industry competitor, as highlighted in the graph:



*When blasted to Sa2½ BS EN ISO 8501-1:2007, 50µm dft.

Exterior Performance Panel Test results



Leading competitor @7 days.
Result: 40% corrosion.



Pro-Cryl™ @3 months.
Result: 20% corrosion.

Technical information

Pro-Cryl™ 7000 offers the user a high solids water-based option which is low in VOC when compared to typical solvent based products. It is designed for spray application and gives the user an increased fabrication window. For optimum performance, blast clean to Sa2½ BS EN ISO 8501-1:2007. Average surface profile in the range 30-50 microns.

Type	Water-based.
Volume solids	43%.
VOC EC SFD	30g/litre.
DFT (µm)	25.
Time to touch dry	Typical 25mins @ 15°C, 15mins @ 23°C.
Time to recoat*	Typical 2hrs @ 15°C, 1hr @ 23°C.
Time to handle	Typical 40mins @ 15°C, 25mins @ 23°C.
Shelf Life	12 Months.
Application air temperature	>10°C.
Substrate temperature	3°C above dew point.

* Factors such as air movement and humidity must also be considered.



To learn more, contact us

Europe, Middle East & Africa: +44 (0)1204 521771

North America: +1 800 524 5979

Asia: +8 621 5158 7798

sales.uk@sherwin.com

www.sherwin-williams.com/protectiveEMEA