

FAST CLAD™ ER



FAST RETURN TO SERVICE SOLVENT-FREE EPOXY LINING

Fast-Clad™ ER pioneered the transition of solvent-free epoxy technology to the next level in terms of performance and fast return to service. Adding superior flexibility and ultra-fast curing to the excellent edge retention, film forming and high-build properties of the Sherwin-Williams solvent-free epoxy product line, Fast-Clad ER inaugurated the era of epoxy lining solutions with return to service of 24 hours or less.

FAST

The possibility to be applied as a single coat system together with its ultra-fast curing properties enables a return to service in 24 hours or less (depending on temperature). In fabrication shop applications it will be cured to handle in three hours or less, allowing foot traffic within the same time frame to allow for quick inspection after installation.

TOP PERFORMANCE

This heavily cross linked amine curing system is combined with an enhanced rheology to provide high chemical resistance, film flexibility and excellent barrier

properties. Together with enhanced edge retention features, this combination of features deliver a high durability solution ready to provide decades of service whether exposed to crude oil, alternate immersion in ballast tanks or any other of the allowed uses.

FASTER AND SAFER INSPECTIONS

When enhanced with Opti-Check™ - Optically Activated Pigments (OAP) technology, Fast Clad ER can be easily and thoroughly inspected for holidays, pinholes, and low film thickness. This allows applicators to correct issues quickly prior to service.

FEATURES

- Ultra fast curing: 3 hrs to handle, 24 hrs to immersion service
- Single coat application
- Opti-Check™ (OAP) technology
- Enhanced edge retention properties
- Flexible (5% elongation)
- Low odor, low VOC.

BENEFITS

- Quick turnaround saves time and costs
- Reduced application time and costs
- Faster and more thorough inspection
- Good edge and weld coverage
- Prolong service life
- Preferable towards environmental regulations.

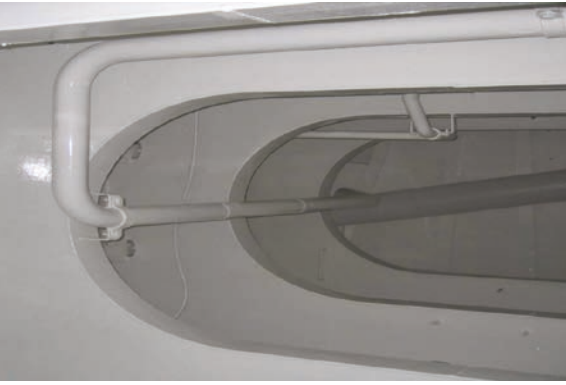
FROM SPEC TO PROTECT

protectiveemea.sherwin-williams.com

**SHERWIN
WILLIAMS®**

FAST CLAD™ ER

FAST RETURN TO SERVICE SOLVENT-FREE EPOXY LINING



KEY APPLICATIONS

Any industry where quick return to service and durability are key may benefit from the Fast Clad ER ultra-fast curing properties. Oil and gas and marine are two good examples with many applications:

- Crude oil storage tanks
- Refined fuel storage tanks
- Pipelines
- Offshore subsea and tanks
- Water ballast tanks
- Crude oil tanks in oil tankers
- Potable water tank interiors.



THE SHERWIN-WILLIAMS DIFFERENCE

Sherwin-Williams Protective & Marine delivers world-class industry subject matter expertise, unparalleled technical and specification service, and unmatched regional commercial team support to our customers around the globe. Our broad portfolio of high-performance coatings and systems that excel at combating corrosion helps customers achieve smarter, time-tested asset protection. We serve a wide array of industries across our rapidly growing international distribution footprint, including oil and gas, water and wastewater, bridge and highway, steel fabrication, flooring, food and beverage, rail and power, and marine.

SHERWIN-WILLIAMS®

protectiveemea.sherwin-williams.com
05/21 EMEA10036/V04/PC

United Kingdom:

+44 (0)1204 556420
enquiries.uk@sherwin.com

Europe and Africa:

+44 (0)1204 556454
emea.pm.exportsales@sherwin.com

Middle East:

+971 4 8840200
sales.me@sherwin.com

India:

+91 9871900878
pmsales.india@sherwin.com